

# MiNiMonsterLue

## Step by step instructions:

Cut all patten pieces.

Main fabric:



Lining:



Fusible interfacing, stretch and stable:



### Interfacing:

1)

Iron stretch interfacing (H180) to wrong side of part 2 (band) and bottom of part 3 (lining).

\*Make sure the stretch is horizontal.

\*H180 melts at elevated temperatures, I use 2 dots on my iron.

Iron stable interfacing (H250) to part 4 (visor) two layers on wrong side of both pattern pieces.



### Visor:

2)

The visor must be symmetrical.

Put the visor pieces on top of each other right sides together, ensure they are the same. Cut away excess fabric.



Fold pattern pieces in half to make sure both sides are the same. Cut away excess fabric.

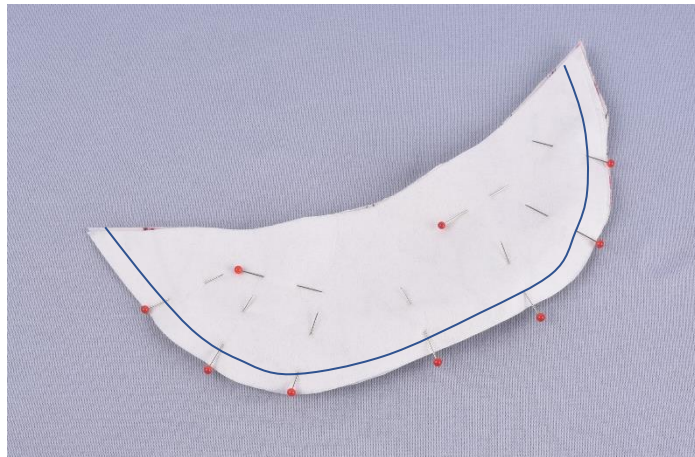


3)

Put pattern pieces right sides together and pin carefully. Add a few needles further in to prevent the pieces moving while sewing.

Use the edge as your guide, sew together with a regular seam about 0.6 cm from the edge.

Remove seam allowance down to about 0.4 cm.



4)

Turn visor right side out. Press carefully.

Fold visor to ensure the visor is the same on both sides.

(If the sides are different turn back the pieces and adjust)



5)

Topstitch the visor, 3.5 mm seam length about 0.5 cm from the edge.

Stitch another seam about 0.5 cm inside the first seam. Make sure the seams are even.

\*It might help to use a ditchfoot or other guide solutions.

Cut away the visor ends.

The visor is now ready to be fitted between part 2 (band) and part 3 (lining) in the next step.



6)

Make sure you have all you notches marked, on part 2, 3 and 4.

\*The notches show center and visor placement.



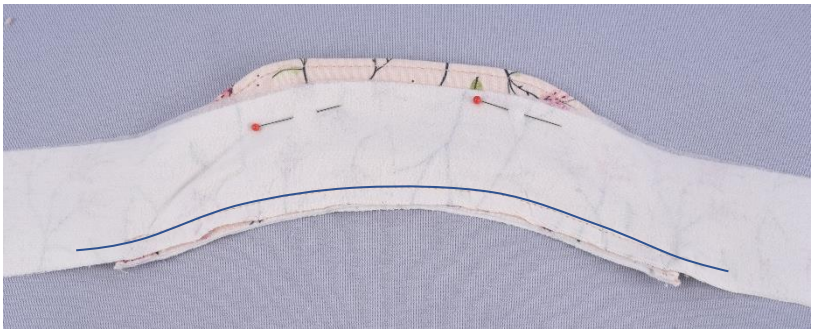
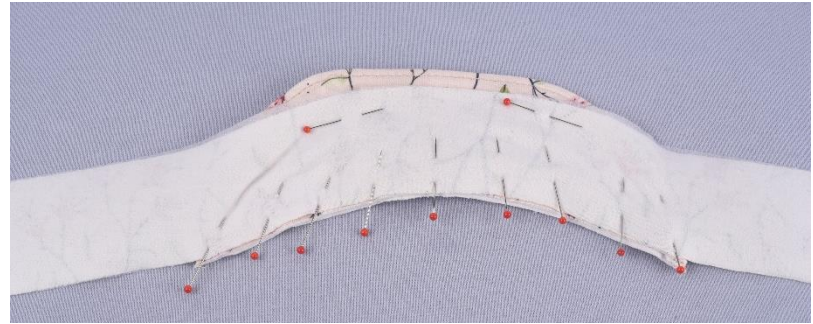
7)

Place center of visor against center of part 2 right sides together. Pin down, you need to stretch part 2 to fit with visor placement notches.

Pin extra needles to ensure the fabric is stable while sewing.

Baste the pieces together about 0,5 cm from the edge start about 2 cm before and sew about 2 cm past the visor.

\* Make sure the visor fits between the notches.



8)

Place part 3, (lining) against part 2 (band), right sides together. The visor is now in between part 2 and 3.

Pin extra needles to ensure the fabric doesn't move when sewing.

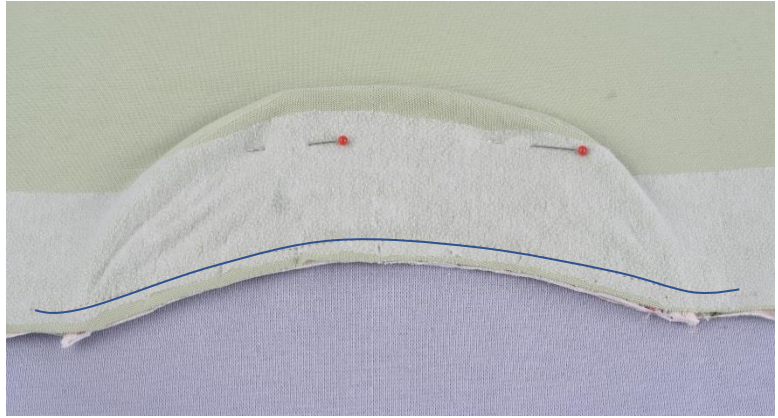


9)

Baste the pieces together about 0.5 cm from the edge start about 2 cm before and sew about 2 cm past the visor.

Sew together part 2 and 3 with a serger/stretch seam, sew from end to end.

\*You can attach the visor in one step, but the shape of the visor means the layers easily shift when sewing. It helps to baste the layers first.



10)  
Fold part 2 (band) and part  
3 (lining) right sides  
together and sew the side  
seam.

(The visor is in the fold)



Leave a 6 cm gap to turn the  
hat right side out.



11)

Sew together the hat-tops.

\*Look at step 13 to get a nice cross in the middle. This is not important for the lining, but a good run through, before sewing the outer hat.

You have finished the lining.



12)

Part 1 (Outer hat):

*If you have chosen to make Model E or F (Duo or Trippel) you need to move over to add-on instructions page 10 before you continue with step 12 here.*

Fold part 1 right sides together, sew side seam.

\*If you have a logo or patch you want to add, it is good to do that now, before you sew the hat together.



13)

In step 12 you sew together top 1 and 5.

a)

Sew together top 2 and 3.

b)

Sew together top 3 and 4, make sure that the tip of top 4 is lined up with the seam allowance from top 2 and 3. I suggest using a glue pen here to prevent the fabrics moving when sewing.

c)

Part 1 will now look like this. Here you see the «cross from 2,3,4» that you use in step d.



d)

Place the tops right sides together. The seam from 1 and 5 should hit the cross from 2,3,4. Sew together, the seam should run along where I have shown with the tweezers.

\*I would use a glue pen here and turn the right side out to check that the tops match correctly. The seam allowance of your machine will affect where the seam runs. I recommend basting this seam before using a serger/stretch seam.

e)

Here is a finished hat top.



14)

Fasten the serger seam from sewing the tops (outer hat and lining).

\*I usually tie a knot and cut away excess thread. But if you are sewing in very thin fabric, I recommend fastening the thread into the seams.



15)

Place part 1 (outer hat) right sides together inside part 2 (that you sew together with part 3 and 4).

Pin all the way round and sew together.

\*Make sure the two seams in the back fit perfectly, this seam is very visible when wearing the hat.



\*I recommend pinning the visor to prevent it shifting when sewing.



16)

Fold the seam allowance towards the visor. This will simplify step 18.

\*You can also use a glue pen to place the seam allowance the right way.



17)

Turn hat right side out, through the 6 cm opening in part 3 (lining)

18)

Make sure the seam allowance between part 1 and 2 is facing downwards.

Press part 2, all the way around. Make sure the lining is not showing.

\*Pin down the layers to prevent them moving when you topstitch in the next step.



19)

Topstitch with a 3.5 mm stitch length, along the top and bottom of part 2 (band).

Try to keep the same distance from the top and bottom edge, ca. 3-4 mm.

\*I find it easier to sew the top seam first.



20)

Sew shut the opening you used to turn the hat right side out. This is easier if you use a glue pen.

\*If you have a nametag or washing info tag you can attach it now.



**Your MiNiMonsterlue is finished!!!!**

I hope you wish to share pictures of your hat with me.

Please tag me

@minimonstermamma.

Use hashtag:

#minimonsterlue

#minimonsterdesign

© MiNiMonster design 2022

Copying and distribution of this pattern in any form is prohibited. You are welcome to sell garments in small quantities from these patterns; crediting

MiNiMonster design in your listings would be much appreciated!