
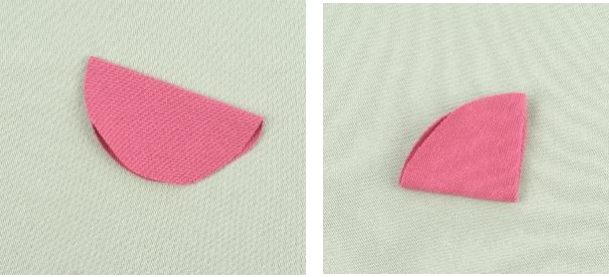



MiNiMonsterLue

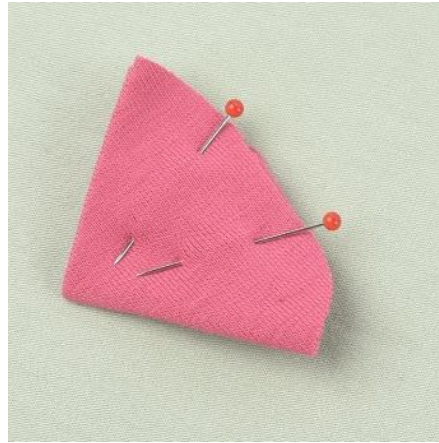
ADD-ON instructions:

<p>Model A, Flower:</p> <p>1) Cut out 5 pattern pieces.</p> <p>Choose the size according to the size you are sewing, or you can adjust size according to desired impact.</p>	
<p>2) Fold pattern piece twice and press.</p> <p>Repeat for all pattern pieces.</p>	 

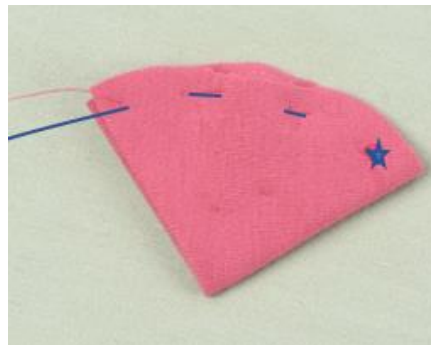
3)

Divide the piece, I have chosen 3 parts. This way my flower petal will have 3 folds.

I use needles to indicate where I will sew.



Use a needle and thread to make the folds in the flower petal. Fasten the thread (indicated by the star on the first petal) and sew the stitches as shown on picture.



Continue with the next petal.

Make sure you don't turn the petal around when you sew them together. Turn the V down while you sew.



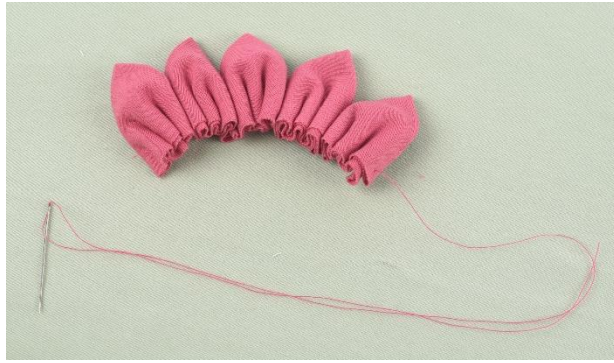
3)

When you have finished all the petals, fold together to create a flower. Sew the ends together.

You need to tighten the thread but be careful, so it doesn't break.

Baste another round to ensure the flower is stable.

This leaves a hole in the middle of the flower; I prefer to use a large button to cover this up.



Attach the flower to your hat 😊



Model B-Bow:

1)
Part 1, fold in the long side in about 0,5 cm past the middle, right side together. Repeat for the other side, leaving about a 1 cm overlap.

Pin and sew the short end.

Fold part 2 right sides together and sew the long side.



2)
Turn both pieces right side out.

Fold part 2, into three folds.



3)

Fold part 2 around the bow to check how big your ribbon needs to be. Mark the desired length.

*This will vary according to the thickness of the fabric you use for the bow.

Fold part 2 with the seam outwards.

Sew together and fasten the threads.



4)



Turn part 2 right side out and thread onto the bow.

Baste the pieces together, so they don't come loose while using the hat.



Attach the bow to your hat. 😊



<p>Model C-Knotband</p> <p>1) Fold the pattern piece right side together and sew along the long side.</p>	
<p>2) Follow the pictures for folding, right side together.</p> <p>The arrow indicates the tip you fold down to the front side.</p> <p>Fold the other tip down to the backside.</p> <p>The tips are now nicely folded.</p>	



3)
Sew together.



4)
Your band is ready and can be attached to your hat.

*Opt. You can leave the band loose and have the option of using the hat with or without the band.



<p>Model D- Braid band</p> <p>1) Fold the pattern pieces right sides together and sew along the long side.</p> <p>2) Turn right side out.</p>	
<p>3) Follow the pictures for the braiding, make sure the seams are on the back of the braid.</p>	

4)

Tighten carefully.

If you prefer a tighter braid the bands will be too loose to fit the hat. If this happens just cut the bands shorter to get the braid you prefer.



5)

Sew the ends together. I prefer to fold one end into the other for a nice finish.



Attach the braid band to you hat.



*Opt. You can leave the band loose and have the option of using the hat with or without the band.



Models E and F- Duo and Trippel

Follow Step by step instructions for MiNiMonsterlue until step 12. Then follow the steps here on the add-on instructions before continuing with step 12.

1)

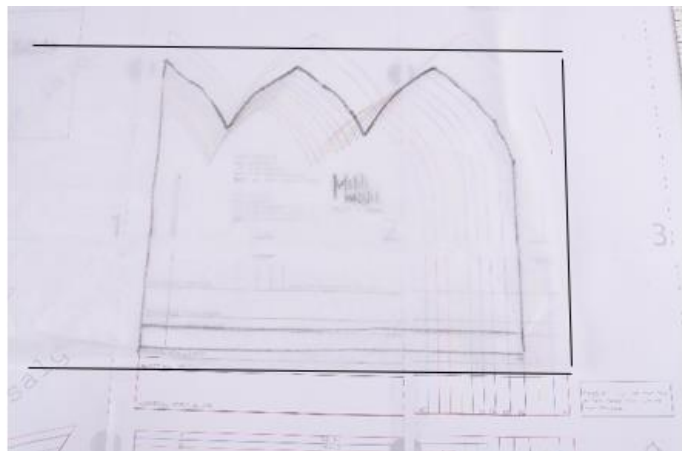
Read through the instructions before starting.

To make Duo or Trippel Model you need the whole pattern piece (not just against fold)

Cut out pattern paper, about 30 x 60 cm (you need less for the smaller sizes).

Place your paper over part 1 (outer hat) on the pattern sheet, so the end of part 1 is near the end of the paper.

Draw part 1 with the desired hat height (low, medium or high). Add 1,2 cm at the bottom for Duo or 2,4 cm for Trippel) This is seam allowance.



2)

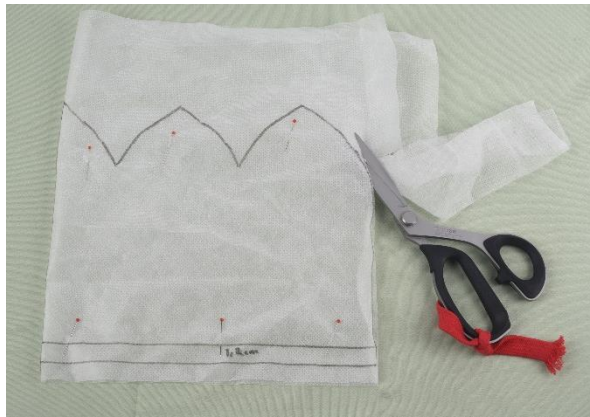
Fold your paper I half (against fold) use pins so the layers don't move.



3)

Cut along the lines.

Remove pins and fold out, now you have the pattern piece for the whole hat (not just against fold)



4)

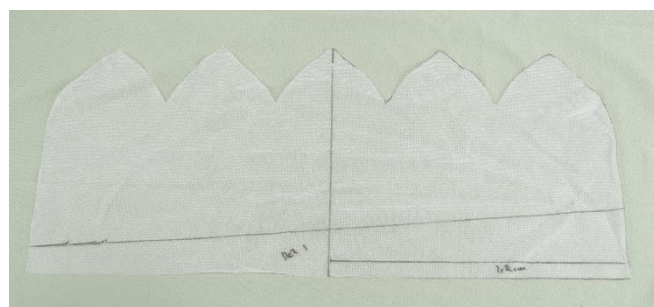
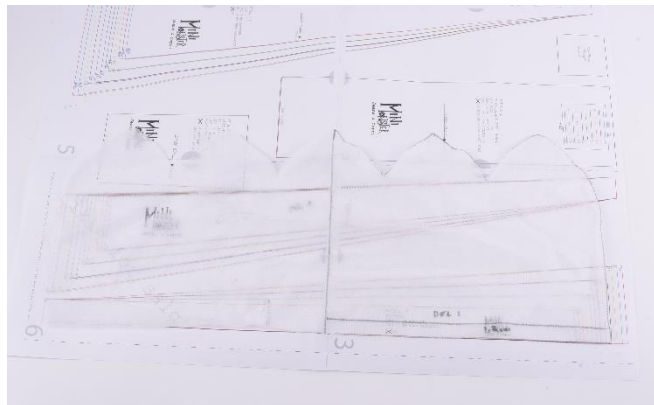
You now need the add-on pattern sheet.

I'll show model F Trippel.

Place the bottom edge on top of the bottom edge of pattern piece Trippel (part 1).

Draw the top line in the right size.

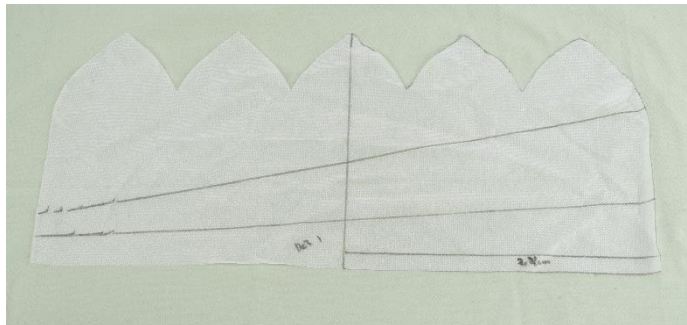
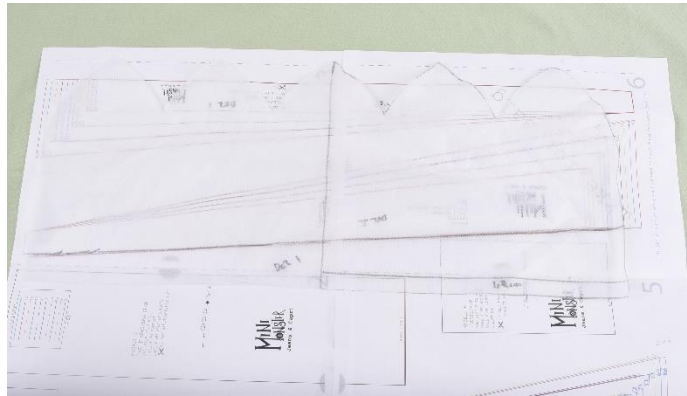
**If you are making the Duo, you do the same thing, placing your paper on the Duo pattern piece, draw the top line and now you can skip to step 6.*



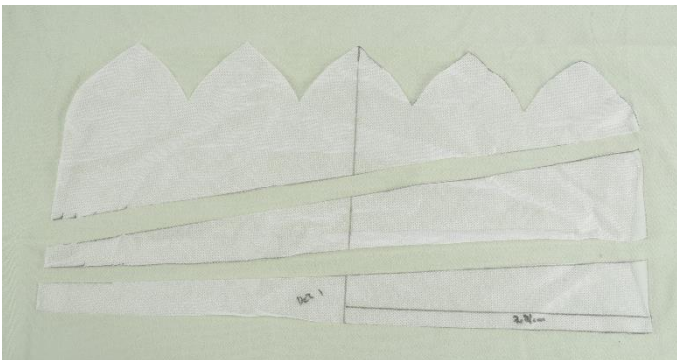
5)
Place your paper on top of Trippel
pattern piece (part 2)

Place the line you just drew along
the bottom of part 2.

Draw the top line in the right size.



6)
Cut along the lines you have
drawn.



5)
Place you pattern pieces on the
fabric and cut out. Seam allowance
is included.



4)
Sew together pattern pieces right sides in.

Now your outer hat (part 1) is ready, and you can continue with step 12 in the Step by step instructions.



© MiNiMonster design 2022

Copying and distribution of this pattern in any form is prohibited. You are welcome to sell garments in small quantities from these patterns; crediting MiNiMonster design in your listings would be much appreciated!